

PART OF S. 1/2 OF SEC. 25 & N. 1/2 OF SEC. 36 T. 8 N., R. 2 E., S. L. B. & M.

70

SUNRIDGE HIGHLANDS NO. 1

LOTS 55 to 59
IN WEBER COUNTY

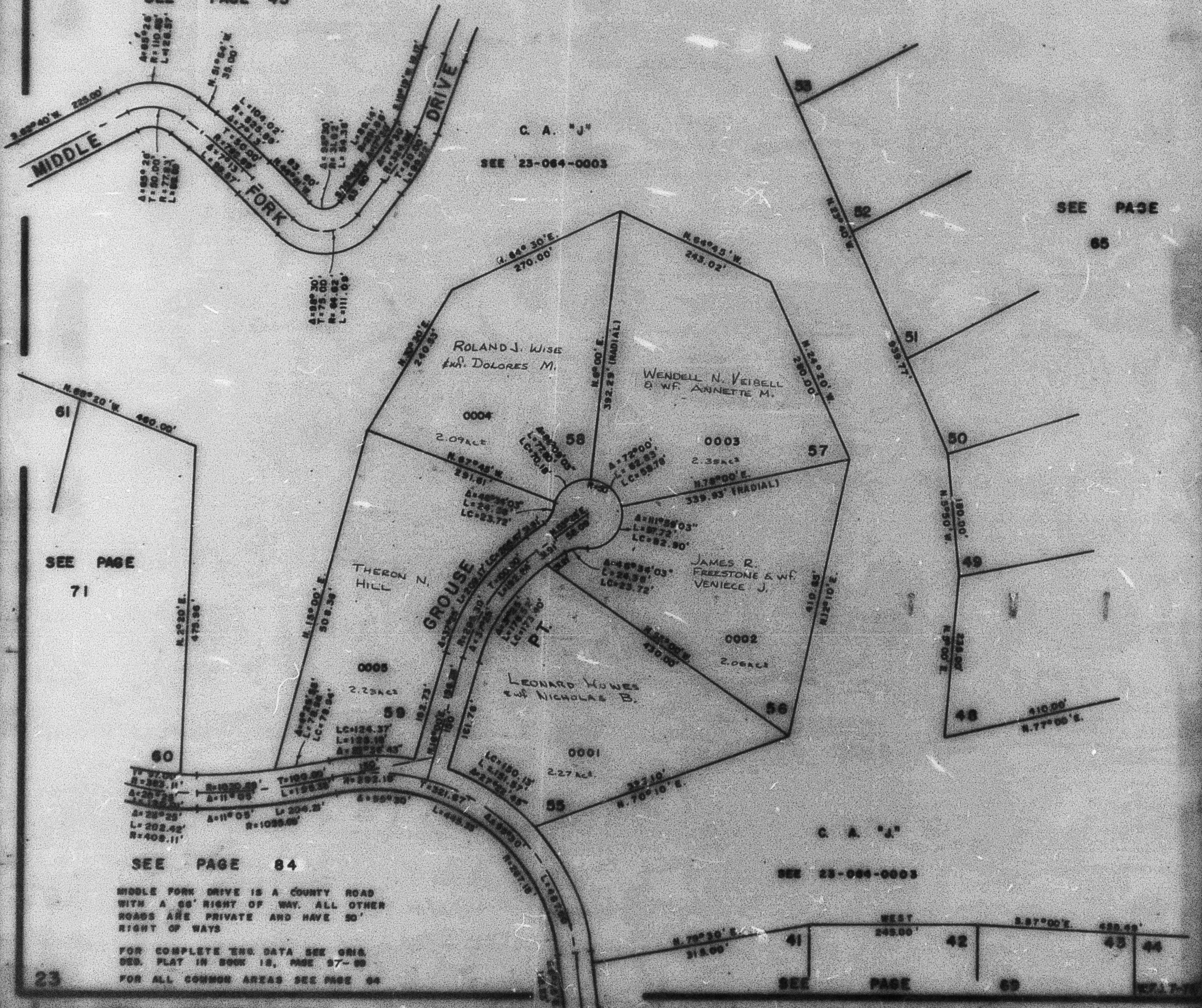
PREFIX 23-070

TAXING UNIT: 58

EXCEPT WHERE OTHERWISE SHOWN
ALL LOTS OWNED BY:

SUNRIDGE INC.
SEE PAGE 45

SCALE 1"=100'



SEE PAGE 71

SEE PAGE 65

SEE PAGE 84

C. A. 'J'
SEE 23-064-0003

MIDDLE FORK DRIVE IS A COUNTY ROAD WITH A 66' RIGHT OF WAY. ALL OTHER ROADS ARE PRIVATE AND HAVE 50' RIGHT OF WAYS

FOR COMPLETE ENG. DATA SEE ORIG. DES. PLAN IN BOOK 18, PAGE 97-98
FOR ALL COMMON AREAS SEE PAGE 84

41	42	43	44
SEE PAGE 69	SEE PAGE 69	SEE PAGE 69	SEE PAGE 69